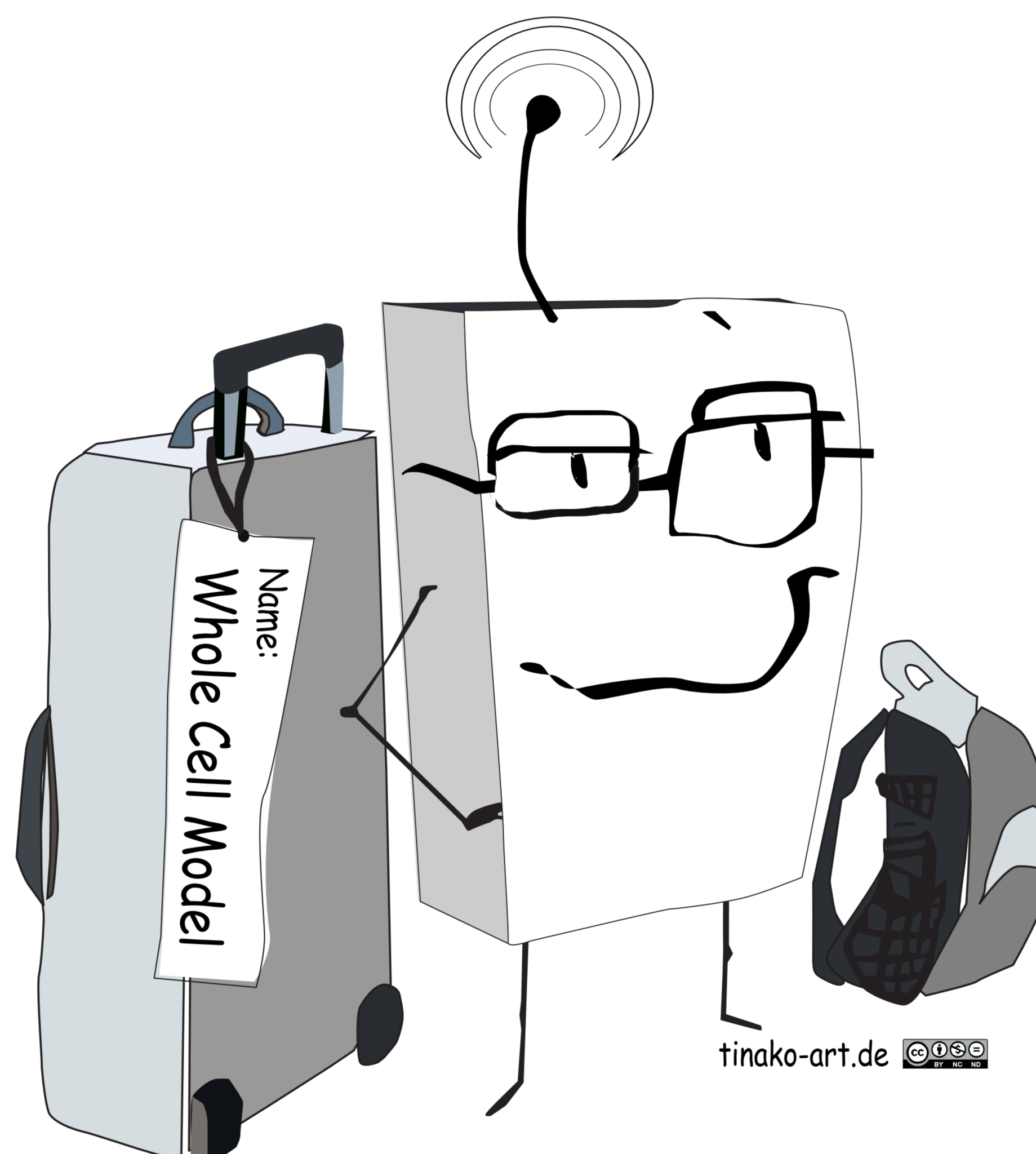
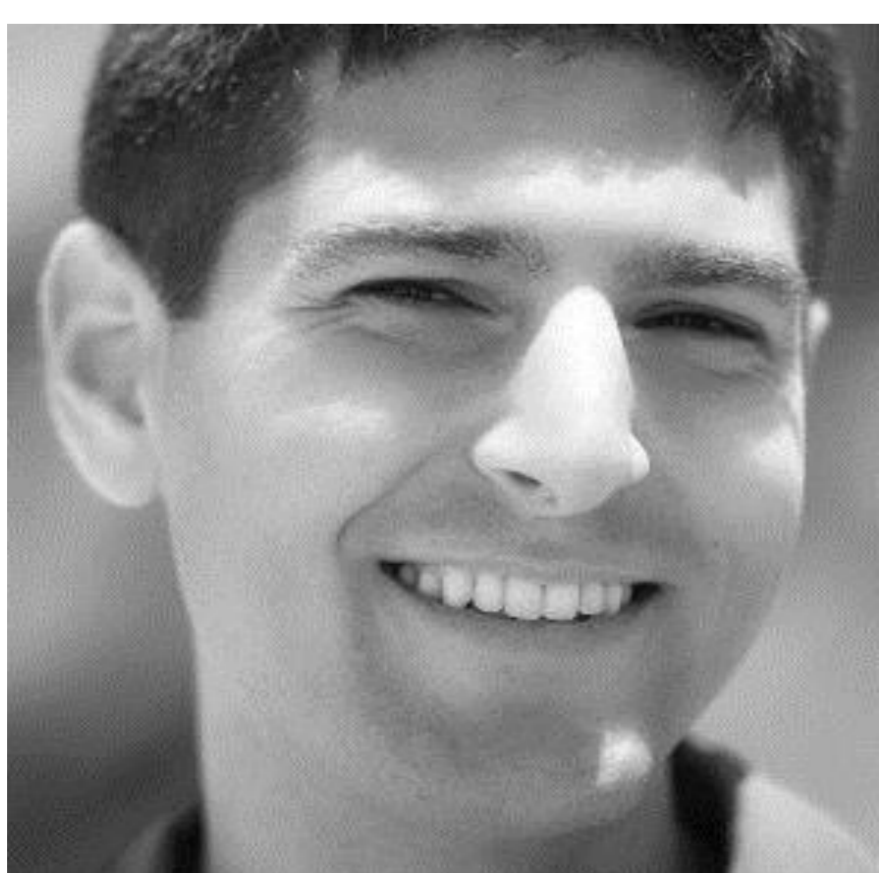


# Toward whole-cell models for engineering

Monday, 9th March 2015, 6 pm  
Aula, Universitätsplatz 1



- ➔ What does the first whole-cell model look like?
- ➔ How can it predict cell cycle dynamics?
- ➔ How do whole-cell models guide synthetic biology?



## Dr. Jonathan Karr

Institute and Department for Genetics and Genomic Sciences  
Mt. Sinai School of Medicine, New York, US

This talk is part of the



**VW Summer School**

Combining Standards for today's models



[bit.ly/wholecell](http://bit.ly/wholecell)